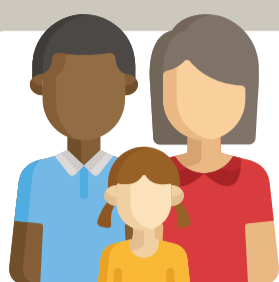


Does your project count as course-based research?

START HERE:



Are you conducting research involving **humans**?

Not sure what counts as research? Click [here](#).

YES

NO

Is the research being carried out **by students** as part of a **course**?



YES

NO

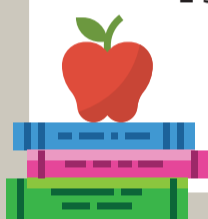
This probably isn't the document for you.

Please submit your project to the Conjoint Faculties Research Ethics Board (CFREB).

Visit the [CFREB website](#) for more information.



Is the course a **thesis** or **independent study** course?



NO

YES

Your project requires regular ethics review.

Is the research **below minimal risk**?



Not sure what counts as minimal risk? Click [here](#).

NO

YES

YES



Are you planning to **share** the data for any **research purposes**, as defined in the TCPS2?

(e.g., publish in a scholarly journal, present at a research conference, etc.)

NO

Your research may qualify as course-based research!
Please complete a course-based application in IRISS.

For further guidance on course-based research, click [here](#).

For access to IRISS, click [here](#).

