

# Canada Biomedical Research Fund (CBRF) and Biosciences Research Infrastructure Fund (BRIF)

## Stage 2 Notice of Intent (NOI)

April 12, 2023 – 1 to 2:30 pm, EDT

Presenter:

- Emma Yoxon, Senior Program Officer, Tri-agency Institutional Programs Secretariat (TIPS)
- Alexandria Béland, Senior Programs Officer, Canada Foundation for Innovation (CFI)



# Outline

Experiencing technical difficulties?

[CBRF-FRBC@sshrc-crsh.gc.ca](mailto:CBRF-FRBC@sshrc-crsh.gc.ca)

- Program overview
  - Proposal types and requirements
  - Eligibility
  - Research hubs
  - Research security
  - Selection process
- Creating and submitting a notice of intent (NOI)
- Question and answer period
  - Use the Q&A function or raise your hand to ask a question



# Canada's Biomanufacturing and Life Sciences Strategy

- \$2.2 billion investment over seven years with two overarching objectives:
  - Continue growing a strong, competitive biomanufacturing and life sciences sector
  - Ensure Canada is prepared for future pandemics by increasing domestic capacity to produce life-saving vaccines and therapeutics

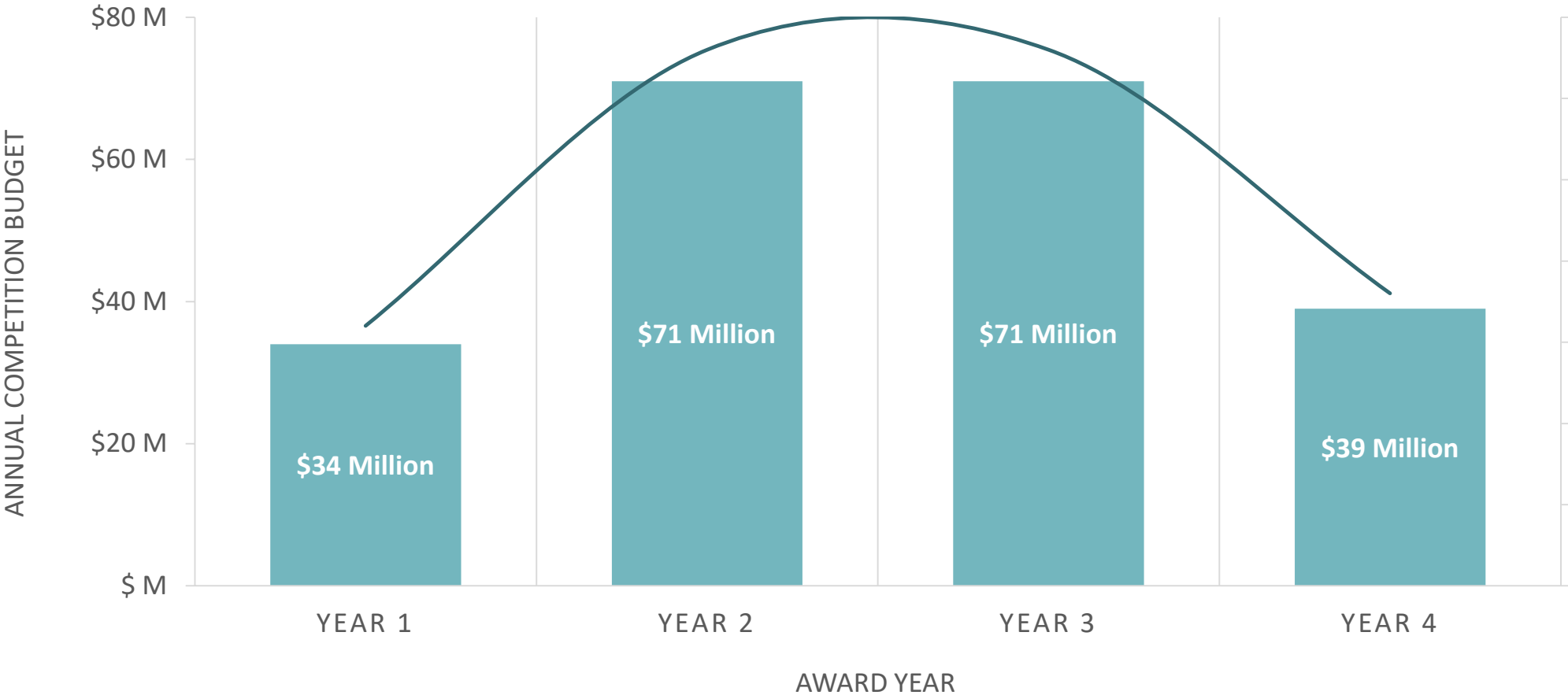
Program	Canada Biomedical Research Fund (CBRF)	Biosciences Research Infrastructure Fund (BRIF)	Clinical Trial Funds (CTF)
Budget	\$250 M	\$500 M	\$250 M
Administered by	Co-delivered between TIPS/SSHRC and CFI	BRIF 1 –CFI BRIF 2 Co-delivered between TIPS/SSHRC and CFI	CIHR

# Program description

	Stage 1	Stage 2	
Grant type	Institutional	Institutional	
Number of awards	Five research hubs	Based on number of approved applications (projects and infrastructure requests) within total competition budget	
Program	CBRF	CBRF	BRIF
Value	Total competition budget of \$10M. \$500,000 per year, per hub. May include up to 25% for indirect costs of research	Total competition budget of \$215M. \$500,000 to \$5 million per year. May include up to 25% for indirect costs of research	Total competition budget of up to \$360M for infrastructure (\$277M) and associated operating costs (\$83M)
Duration	Maximum of 4 years	Maximum of 4 years	Infrastructure project end dates determined through the usual CFI mechanisms

# Distribution of funds: CBRF

- There is no annual allocation for BRIF infrastructure proposals
- Total competition budget for research and talent components (CBRF) = \$215 M over 4 years



# CBRF-BRIF strategic objectives

- Increase specialized infrastructure, and capacity for multidisciplinary, applied research.
- Support training and development, to expand the pipeline of skilled research and talent.
- Accelerate the translation of promising research into commercially viable products and processes.

Only proposals aligned with the Strategy and proposing contributions toward pandemic preparedness and the above objectives will be considered for funding

# Proposal types and requirements

# Types of proposals

- Each proposal can include *one or more* of the following components:
  - Partnered, applied **research** in the biomanufacturing and life sciences sector to accelerate the translation of discoveries into products and services to strengthen the sector
  - Partnered **talent development** to provide skills and training needed to drive innovation and growth in Canada's biomanufacturing industry
  - Research **infrastructure** to support Canada's biosciences research needs

Each research infrastructure or talent development component must directly support one or more proposals that include a research component.



# Key requirements of each component

## Research

- Present partnered, applied research that builds capacity to accelerate the translation of promising discoveries
- Support pandemic readiness and emerging health threats
- Support training and mentoring of highly qualified personnel
- Leverage collaboration through cross-sector partnerships
- Integrate expertise and insights across disciplines
- Identify barriers or limitations of the proposed research and provide mitigation/contingency strategies
- Ensure that any materials, processes and procedures used and developed are in accordance with established standards
- Present a commercialization approach

# Key requirements of each component

## Talent Development

- Present partnered initiatives providing a value-added experience for highly qualified personnel at all levels
- Address the need for talent and skills within the biomanufacturing and life sciences sectors:
  - Focus on skills applicable to the biomanufacturing and life sciences sectors
  - Promote links between trainees and prospective employers
- Encourage national and, where applicable, international mobility across sectors and disciplines

# Key requirements of each component

## Infrastructure

- Propose research infrastructure investments to support and strengthen one or more research components
- Enhance the medium to long-term research capacity of institutions
- Support training of highly qualified personnel
- Ensure the infrastructure is optimally operated and maintained over its useful life
- Build upon and complement existing infrastructure
- Lead to sustained long-term benefits to Canada

# Infrastructure envelopes

- CFI practice for large infrastructure competitions includes the use of infrastructure envelopes to help manage application volume and encourage the submission of strategic, high-quality infrastructure components
  - Each hub has an envelope of up to \$138.5 million for endorsed infrastructure requests
  - Envelopes apply at both the notice of intent and full application stages
  - Flexibility allows hubs and applicants to exceed the envelope by up to 10% at the NOI stage
- There are no submission envelopes for research and talent development components of proposals

# Eligibility

# Eligibility

- All administering organizations must:
  - have met the eligibility requirements for any one of the three federal research funding agencies (CIHR, NSERC or SSHRC);
  - in the case of a public institution, receive the funds for its operating budget directly from a provincial or the federal government, and not through another institution;
  - in the case of a private institution, be not-for-profit and not receive its funding through another institution; and
  - be eligible to receive and administer funds from the CFI for proposals that include a research infrastructure component.

# Eligibility

- For proposals to be considered for CBRF-BRIF funding, they must:
  - be submitted by an eligible administering organization
  - **be endorsed by a research hub**; and
  - in the case of infrastructure or talent development components, directly support one or more proposals that include a research component.

Proposals requesting funds to conduct clinical trials are not eligible for CBRF-BRIF support.

# Research hubs

Role and contact information



# Five research hubs selected in CBRF-BRIF Stage 1

## **University of Toronto**

Canadian Hub for Health  
Intelligence & Innovation in  
Infectious Diseases (HI3)

- [hi3@utoronto.ca](mailto:hi3@utoronto.ca)

## **University of Ottawa, McMaster University**

[Canadian Pandemic  
Preparedness Hub \(CP2H\)](#)

- [klawles2@uottawa.ca](mailto:klawles2@uottawa.ca)
- [lawlessd@mcmaster.ca](mailto:lawlessd@mcmaster.ca)

## **The University of British Columbia**

[Canada's Immuno-Engineering  
and Biomanufacturing Hub](#)

- [immunoengineering.hub@ubc.ca](mailto:immunoengineering.hub@ubc.ca)

## **Université de Montréal, McGill University, Université Laval**

The Eastern Canada Pandemic  
Preparedness Hub – ECaPPH

- [ecapph-pppec@brdv.umontreal.ca](mailto:ecapph-pppec@brdv.umontreal.ca)

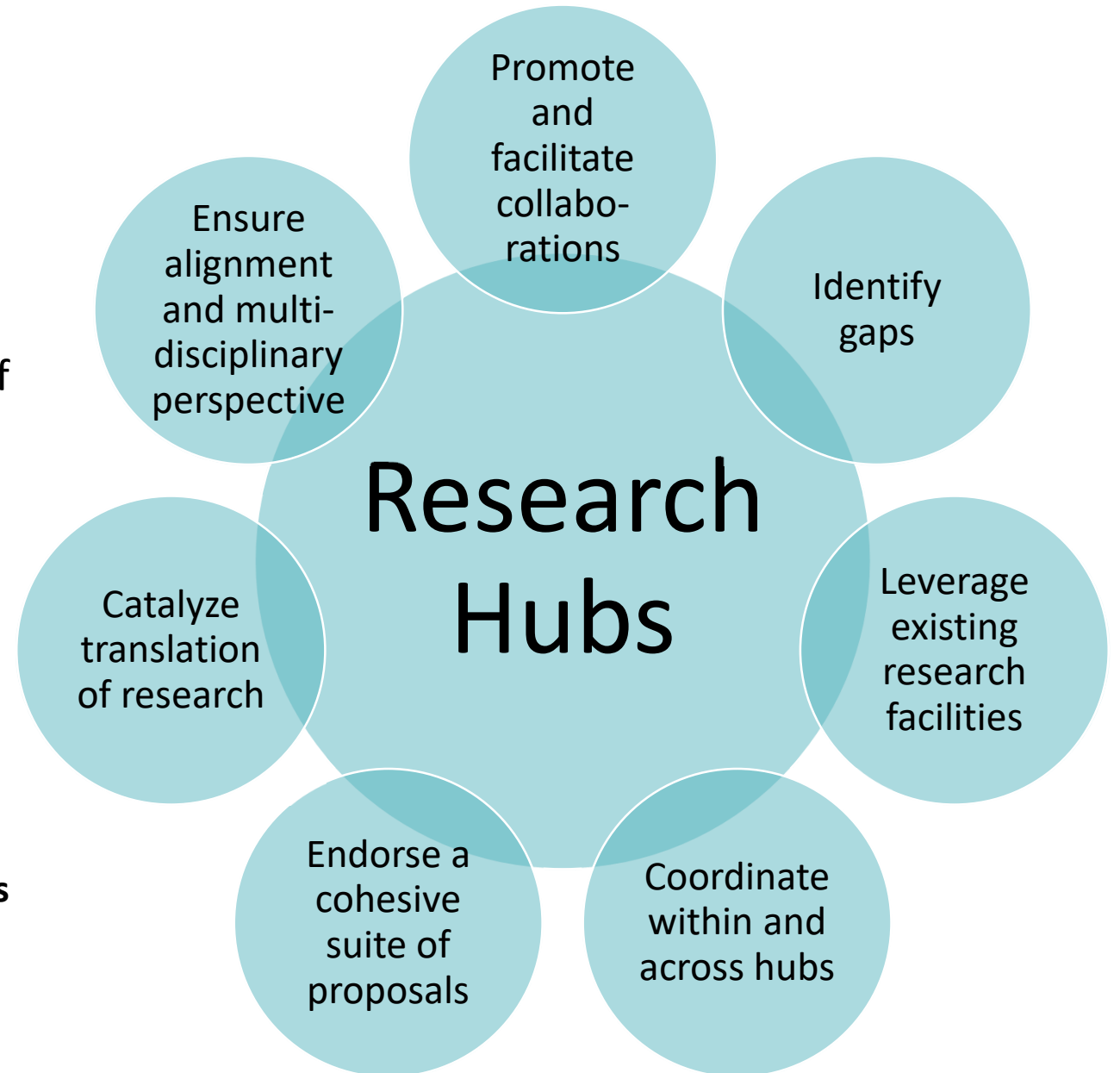
## **University of Alberta**

[The CBRF PRAIRIE Hub](#)

- [Joanne.lemieux@ualberta.ca](mailto:Joanne.lemieux@ualberta.ca)

# Role of hubs

- **Anchor** the hub and **proposed initiatives**
- **Ensure alignment** with the hub's overall research program, the strategic objectives of the funding opportunity and the Strategy
- **Endorse** a cohesive suite of proposals, selected using a sound inclusive process
- **Submit** an endorsement report, addressing elements to assist the merit review process
- Further to the selection of proposals:
  - continue to **promote and facilitate collaborations**
  - continue to **leverage existing research facilities** operated by government and/or non-governmental organizations



# Research security

Information and Resources

# Research security

- The [National Security Guidelines for Research Partnerships](#) apply to CBRF-BRIF Stage 2 applications
- Applicant institutions are required to complete and submit a [risk assessment form](#) (RAF) for partnerships involving one or more private-sector partner organizations
  - Submitted with the **full application**
- Using the RAF, applicants must identify potential risks that their research partnerships may pose to Canada's national security:
  - on the nature of their research (Know Your Research), and
  - their proposed research partners organizations (Know Your Partner)
- If applicants identify risks, or are unsure, they must also submit a risk mitigation plan

# Research security

TIPS and the CFI reserve the right to:

- review any applications on research security grounds and, where necessary, transmit application information to Canada's national security departments and agencies;
- request additional information, as needed, to ensure that any national security risks are identified and addressed before final funding decisions are made;
- decline the participation of any proposed partner organization or recipient of funds on the grounds of unacceptable national security risk;
- refuse an award on the basis of research security, should appropriate measures not be in place to mitigate potential risks; and
- implement additional requirements as appropriate.

# Research security

Researchers and administrators are encouraged to consult the following resources for more information on how to safeguard research and innovation:

- [Safeguarding Your Research Portal](#): guidance, information, tools, case studies, and self-directed courses.
- [National Security Guidelines for Research Partnerships](#): tool to integrate national security considerations into the development, evaluation, and funding of research partnerships
- [Safeguarding Science](#): Interactive workshop from Public Safety Canada
- [Canadian Centre for Cyber Security](#): Hosts resources on the cyber threat environment, including interactive content, publications, alerts, and advisories
- [Canadian Cyber Security Tool](#): Voluntary self-assessment survey

## Coming soon

Research Security Workshop for CBRF-BRIF applicant institutions to raise awareness of:

- potential damage to the integrity of Canadian institutions;
- the potential for the proliferation of dual-use technology;
- loss of valuable intellectual property;
- cyber security considerations; and
- best practices in maintaining a security-conscious research organization.

# Process and timeline

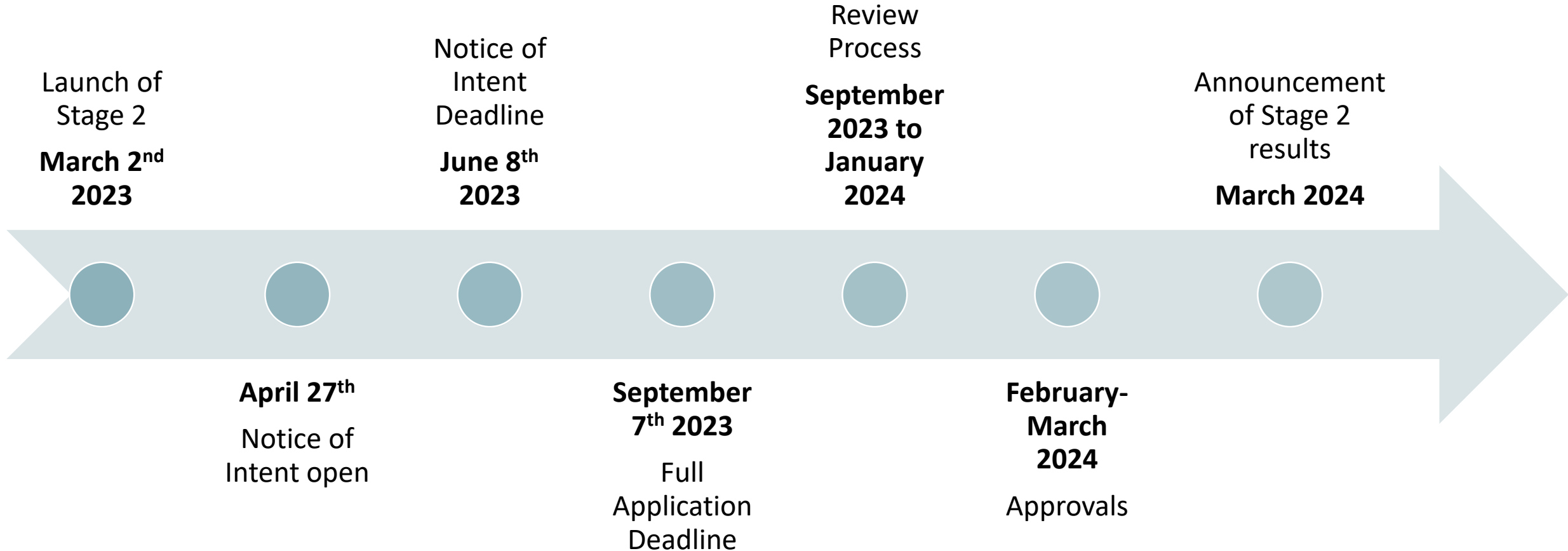
Review process and competition timeline

# Competition Process



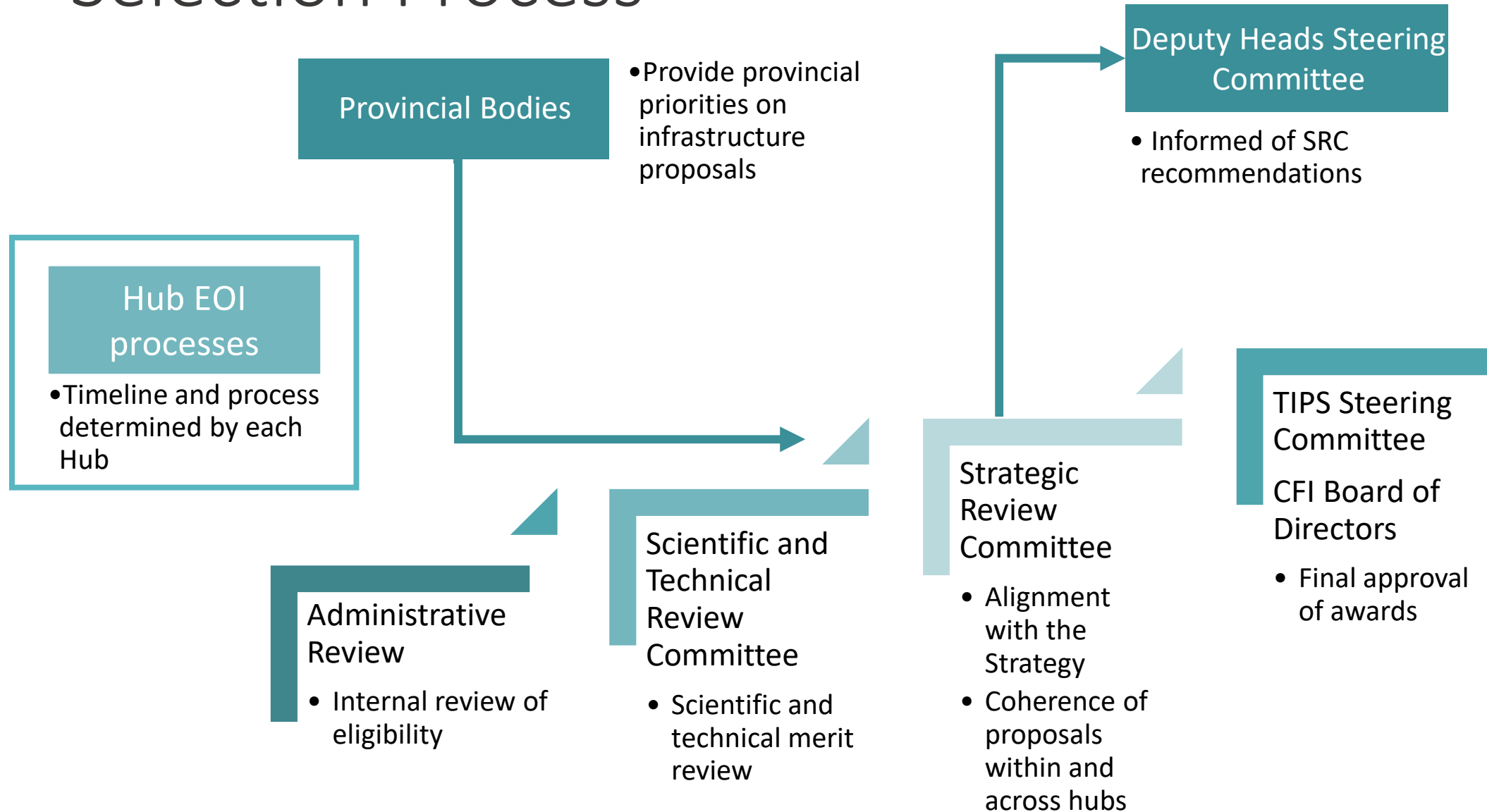


# Competition timeline



*Timeline is subject to change. Hubs and institutions may have internal timelines not represented here.*

# Selection Process



# Selection criteria

		Research and Talent Development	Research Infrastructure
Scientific and Technical		<ol style="list-style-type: none"><li>1. Relevance</li><li>2. Effectiveness</li><li>3. Efficiency</li><li>4. Impact</li><li>5. Contribution of Partners</li><li>6. EDI &amp; ECRs</li></ol>	<ol style="list-style-type: none"><li>1. Need</li><li>2. Building Capacity</li><li>3. Sustainability</li></ol>
	Strategic	<ol style="list-style-type: none"><li>1. Relevance</li><li>2. Impact</li><li>3. Coherence</li></ol>	

- ✓ Proposals will be evaluated using the published [ratings matrices](#).

Creating and submitting a notice  
of intent (NOI)

# Creating and submitting a NOI

- Convergence Portal
  - The Convergence Portal supports only the latest versions of Google Chrome, Microsoft Edge, Apple Safari and Mozilla Firefox
- The organizational research administrator is responsible for creating, ensuring completeness of and submitting the NOI.
- For NOIs including an infrastructure component, the organizational research administrator should be an institutional representative authorized to submit on behalf of the institution per the Institutional Agreement between the administering institution and the CFI.
- The submission of an NOI is required for creation and submission of a full proposal.

# NOI requirements

## 1. Application details

- Title and language

## 2. Proposal Details

- Type of proposal, links to other proposals

## 3. Research Hub

- Indicate which research hub you **anticipate** will endorse your full application

## 4. Summary of Proposal

- Provide a summary (maximum 2,000 characters), written in lay language, describing the proposal and how it supports the vision and program of the proposed research hub
  - Will be published - refrain from including sensitive or proprietary information

### Type of Proposal (required)

Indicate the category under which your proposal falls.

Research, Talent development & Research infrastructure

Research

Talent development

Research infrastructure

Research & Talent development

Research & Research infrastructure

Research, Talent development & Research infrastructure

All sections may be updated at the CBRF-BRIF Stage 2 application stage.

# NOI requirements

## 5. **Research & Talent Keywords**

- List between 5 and 15 keywords to describe the proposed research and/or talent development component(s)

## 6. **Infrastructure Keywords** (if applicable)

- List between 5 and 15 keywords to describe the research infrastructure component of the proposal

## 7. **Type of Activity**

- From the [CRDC](#)

## 8. **Fields of research**

- At least three [CRDC](#) primary fields of research from different groups (disciplines)
- Maximum of 17

## 9. **Socioeconomic Objectives**

- From the [CRDC](#); at least two, up to three

All sections may be updated at the CBRF-BRIF Stage 2 application stage.

# NOI requirements

## 10. & 11. Partner Organizations & Participants

- **Partner organizations** may include:

- Academic institutions, including universities, colleges, polytechnics and institutes
- Other research organizations (including research hospitals)
- Private sector\*
- Public sector
- Philanthropic / not-for-profit
- " |I " indicates infrastructure

**\*Private sector partner organisations** must be incorporated pursuant to the laws of Canada and must be doing business in Canada

- **Participants**

- Must include a Director
- May also include a Co-Director
- Maximum of 15 Team members

An individual may serve as a Director or Co-Director **on only one** CBRF-BRIF proposal.

### Role (required)

- Co-Director
- Director
- Partner Organization - Academic
- Partner Organization - Academic | I
- Partner Organization - Other research
- Partner Organization - Other research | I

All sections may be updated at the CBRF-BRIF Stage 2 application stage.



# Participant roles

Full- or part-time students, postdoctoral researchers, and research associates are not eligible to participate as a Co-Director or Team Member.

	Director (mandatory)	Co-Director (optional)	Team Members (optional)
How many?	1 individual	1 individual	Maximum of 15
Roles	<ul style="list-style-type: none"> <li>Responsible for the leadership of the project and the coordination of proposed activities</li> <li>Completes the proposal</li> <li>Coordinates the overall financial administration of the grant</li> </ul>	<ul style="list-style-type: none"> <li>Shares leadership responsibility with the Director</li> <li>May share responsibility for completing the proposal</li> <li>May share coordination of financial administration of the grant</li> </ul>	<ul style="list-style-type: none"> <li>Contributes to the execution of the research project</li> <li>Can <b>view</b> the proposal</li> <li>May access grant funds</li> </ul>
Eligibility	<ul style="list-style-type: none"> <li>Must be affiliated with the grant administering organization</li> </ul>	<ul style="list-style-type: none"> <li>Affiliation <b>may not</b> be a federal, provincial, territorial or municipal government department or a for-profit organization</li> </ul>	<ul style="list-style-type: none"> <li>Affiliation <b>may not</b> be a federal, provincial, territorial or municipal government department or a for-profit organization</li> </ul>

# NOI requirements

## 12. Proposed Budget

- As applicable, enter the estimated total amounts for the:
  - research and/or talent development budget(s)
  - total research infrastructure budget (minimum \$1 million)
  - amount requested from CFI (up to 60% total research infrastructure budget)

## 13. Certifications, licences and permits

- [Requirements for certain types of research](#)

## 14. Suggested reviewers

- Five to ten

## 15. Reviewer exclusions

- Names of up to 15 individuals who cannot provide an objective review of your application.

All sections may be updated at the CBRF-BRIF Stage 2 application stage.

# Questions and resources

- Contact information

- For more information about the CBRF, email [CBRF-FRBC@sshrc-crsh.gc.ca](mailto:CBRF-FRBC@sshrc-crsh.gc.ca)
- For more information about the BRIF, email [BRIF-FIRSB@innovation.ca](mailto:BRIF-FIRSB@innovation.ca)
- For help with the Convergence Portal, contact [websupport@convergence.gc.ca](mailto:websupport@convergence.gc.ca)

- Resources

- [CBRF-BRIF Landing Page](#)
- [CBRF-BRIF Stage 2 Description](#)
- [Selected Research Hubs](#)
- [Selection Criteria](#)
- [Ratings Matrices](#)

- Important dates and deadlines\*

- **April 27<sup>th</sup>** Notice of intent available on Convergence portal
  - Guidelines posted April 26<sup>th</sup>, at the latest
- **June 8<sup>th</sup>** Notice of intent deadline
- **June 15<sup>th</sup>** Full application available on Convergence portal
  - Guidelines posted 1 week before

*\*Dates are subject to change. Hubs may have internal deadlines not represented here.*