



Earth Impulse Solutions (EIS) is a signal processing and imaging company that provides optimal solutions for sub-surface imaging before and while drilling, efficient drilling and well placement, development and production planning of complex petroleum and geothermal reservoirs.

Who we are

The Directors of EIS have extensive industry and research experiences in geophysical seismic processing and imaging, drilling control and optimization, and reservoir characterization.



Nasser Kazemi



Roman Shor



Kris Innanen



Ian Gates

Value proposition

- Low upfront cost
- No disruption of the drilling process
- Optimal well-placement
- Increasing drilling efficiency (ROP)
- Reducing safety risks
- Improving production

What we do

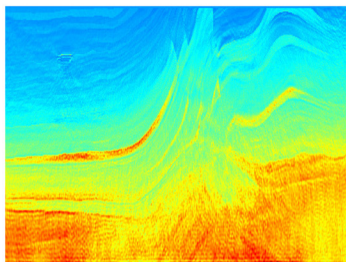
We provide proprietary software solutions for:

- Seismic while drilling imaging and full waveform inversion
- Drilling optimization
- Subsurface monitoring for petroleum, aquifer, and geothermal reservoirs
- Seismic signal processing
- Data analytic solutions for subsurface characterization and velocity estimation

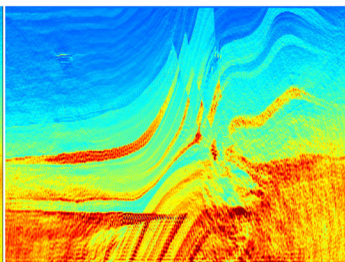
Customers

- Petroleum production companies
- Drilling companies
- Geothermal resource companies
- CO₂ sequestration companies and other underground systems
- Organizations that conduct assessments of underground systems such as regulators and risk assessors

Conventional FWI

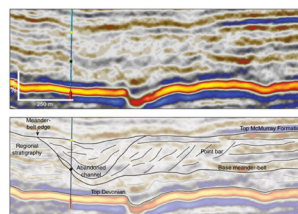


SWD-FWI

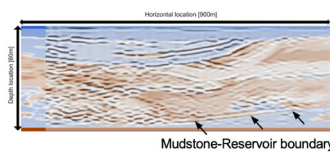


Illumination issues and lack of low frequencies in FWI

Conventional image



SWD image



Poor illumination results in 1) sub-optimally placing the horizontal wells in SAGD settings, 2) drilling into non-reservoir sections, 3) reducing drilling efficiency and production

Illumination issues in oil sands reservoir – McMurray Formation